

EUV-600SxxxSV

600W IP67

90-305Vac

				(2)		(3)
--	--	--	--	-----	--	-----

	0.90	-	-	100-240Vac, 50-60Hz, 60%-100% (360 - 600W)
	-	-	20%	
	-	-	10%	220-240Vac, 50-60Hz, 75%-100% (450 - 600W)

	-2.5%Vo	-	2.5%Vo	100%
(pk-pk)	-	-	2%Vo	0% - 100% 20MHz 0.1µF 10µF
	-	-	5%Vo	
	-	-	± 0.5%	100%
	-	-	± 1.0%	
	-	-	0.5 s	120Vac 60% - 100%
	-	-	0.5 s	220Vac 60% - 100%
	-	-	5%Vo	/ 1 A/ s 25% ~ 100%
	-	-	10 ms	
	-	0.03%/ C	-	= 0 C~Tc

25 C

@120Vac: EUV-600S048SV EUV-600S054SV	88.5% 89.0%	90.5% 91.0%	- -	100% 25 C 2%
@220Vac: EUV-600S048SV EUV-600S054SV	90.5% 91.0%	92.5% 93.0%	- -	100% 25 C 2%
@277Vac: EUV-600S048SV EUV-600S054SV	91.0% 91.5%	93.0% 93.5%	- -	100% 25 C 2%
	-	201,000 Hours	-	220 Vac 25 80% (MIL- HDBK-217F)



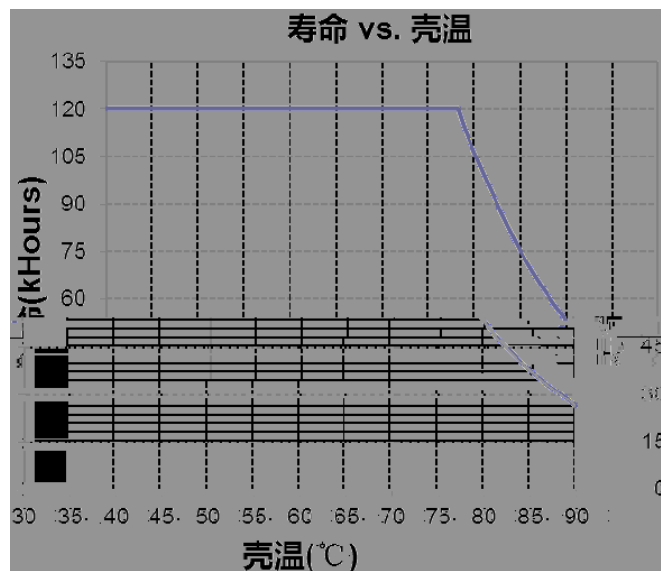
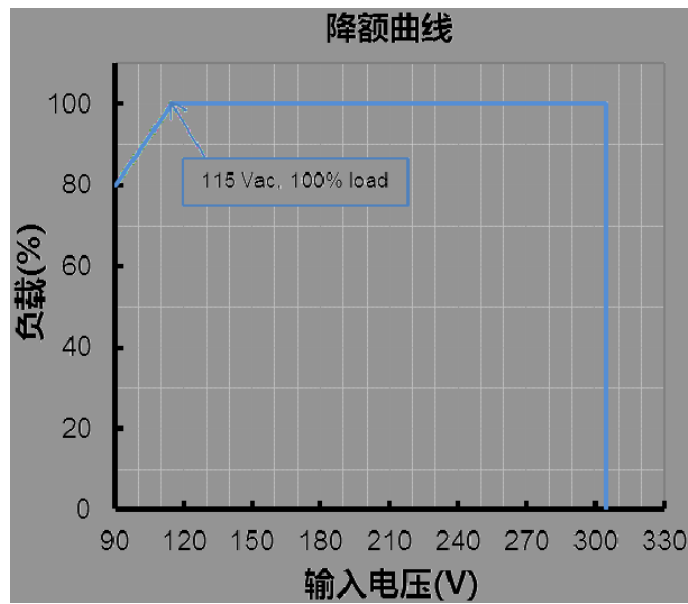
EUV-600SxxxSV

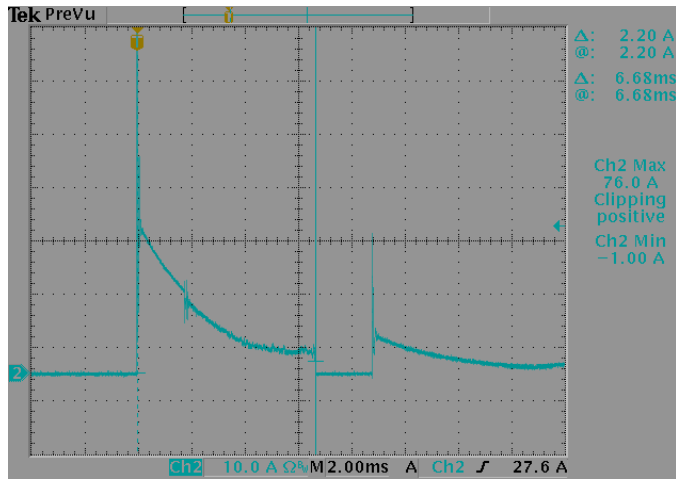
Rev. B

600W

IP67

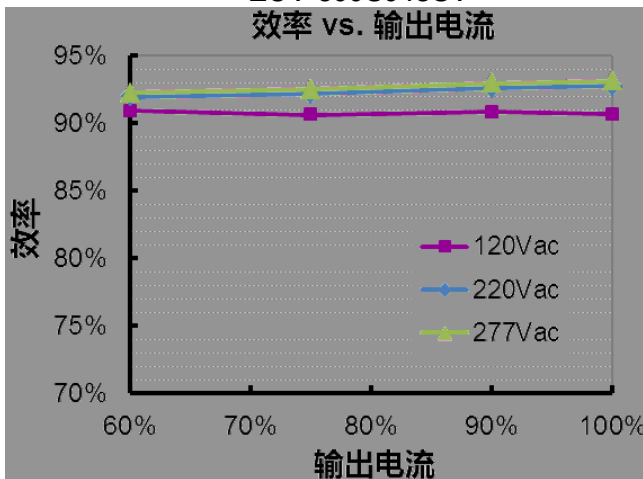
- 1 EMI () EMI
- 2 , / ()
(IEC 60598-1-10.2)





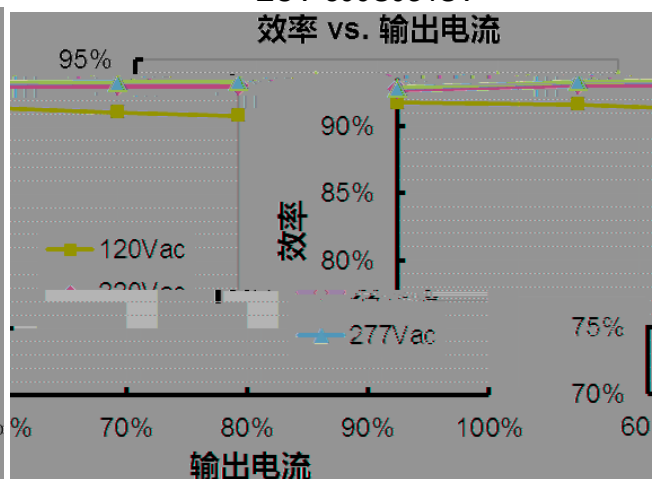
EUV-600S048SV

效率 vs. 输出电流

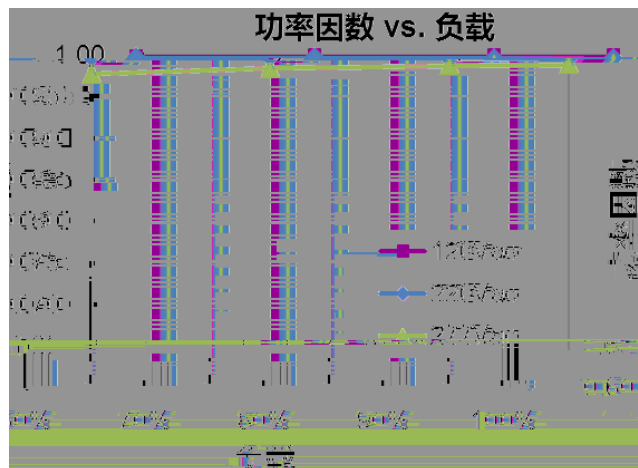


EUV-600S054SV

效率 vs. 输出电流

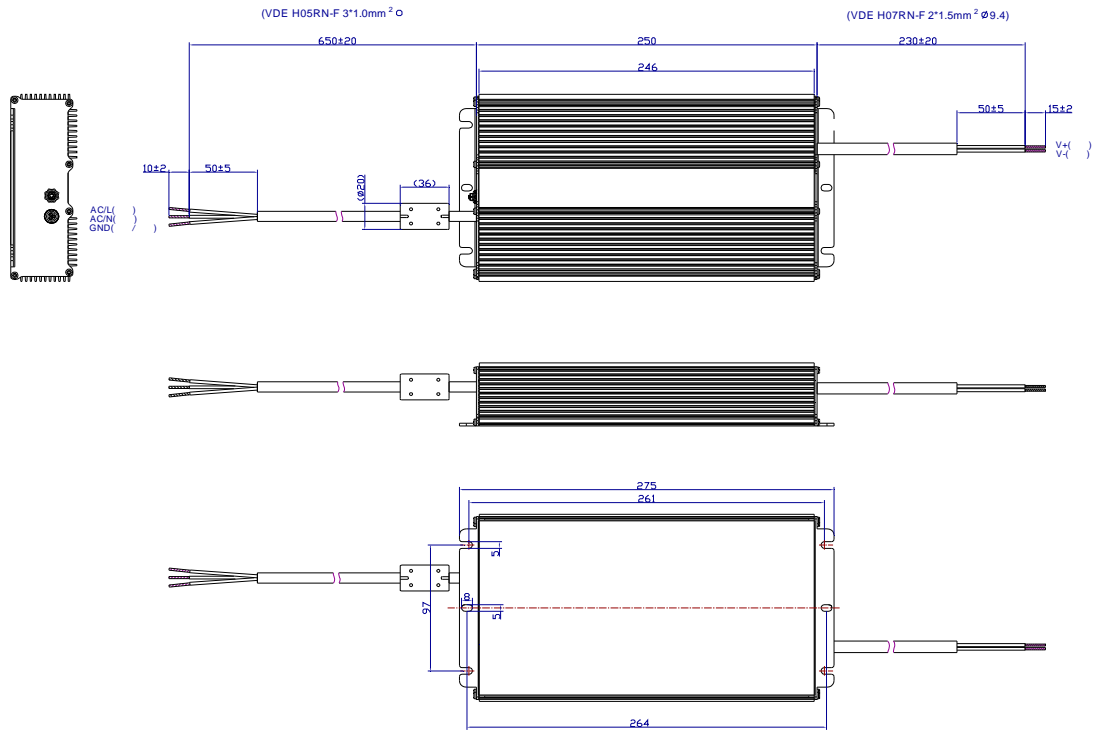


功率因数 vs. 负载





	105% _{lo}	110% _{lo}	120% _{lo}	



PROJ: : ±1

2019-11-06	A		/	/
2019-12-17	B			
			EN 61000-4-5	